


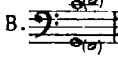


From the Columbia Pictures-Romulus motion picture production of Lionel Bart's "OLIVER!"

WHO WILL BUY?

S. A. T. B.

Arranged by
NORMAN LEYDEN

S.  A.  T.  B. 



Words and Music by
LIONEL BART


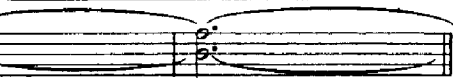
Moderately (♩ = about 80)

3 Solo Voices S.  A.  T.  B. 

Alto Solo mf

Who will


Soprano  Alto 

Tenor  Bass 

unis. p

Doo

Moderately (♩ = about 80)

Piano 

mf L. H.

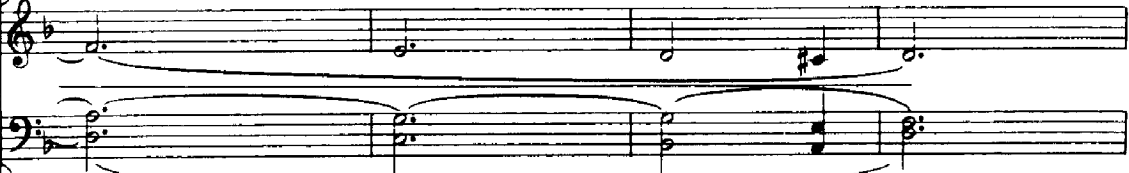
p

Ped. - - - - - *

A



buy my sweet red ros - es, two_ blooms for a pen-ny? Who will



A



p

buy my sweet red ros - es, two_ blooms for a pen - ny?_

Doo Oo_

This system contains a vocal line and piano accompaniment. The vocal line is in a single staff with lyrics. The piano accompaniment consists of two staves (treble and bass clef) with chords and melodic lines.

Sop. II solo mf **B** Freely

Will you buy an - y milk to - day,

This system contains a vocal line and piano accompaniment. The vocal line is in a single staff with lyrics. The piano accompaniment consists of two staves (treble and bass clef) with chords and melodic lines.

B Freely

p

This system contains piano accompaniment for two staves (treble and bass clef). It includes a dynamic marking 'p' (piano).

mis - tress? An - y milk to - day, mis - tress?

Alto solo mf

Who will buy my sweet red

unis. p

Doo

p

This system contains the first vocal line and piano accompaniment. The vocal line starts with the lyrics "mis - tress? An - y milk to - day, mis - tress?". The piano accompaniment features a series of chords in the right hand and a bass line in the left hand. A dynamic marking of *p* is present at the end of the system.

An - y milk to - day, mis - tress?

ros - es, two_ blooms for a pen - ny?_

unis.

Doo

Oo

unis.

This system contains the second vocal line and piano accompaniment. The vocal line continues with the lyrics "An - y milk to - day, mis - tress? ros - es, two_ blooms for a pen - ny?_". The piano accompaniment continues with chords and a bass line. Dynamic markings include *unis.* and *unis.* for the vocal parts.

C Freely

Sop. I solo

Musical staff for Soprano I solo, starting with a forte (*f*) dynamic. The melody features a triplet of eighth notes in the second measure.

Ripe straw-ber-ries, ripe! Ripe straw-ber-ries, ripe!

Sop. II solo

Musical staff for Soprano II solo, starting with a mezzo-forte (*mf*) dynamic. The melody is mostly rests, with a short phrase at the end.

An - y

Alto solo

Musical staff for Alto solo, containing rests.

mf *p*

Musical staff for piano accompaniment (treble clef), starting with a mezzo-forte (*mf*) dynamic and ending with a piano (*p*) dynamic. The melody is a simple accompaniment.

p

Musical staff for piano accompaniment (bass clef), starting with a mezzo-forte (*mf*) dynamic. The melody is a simple accompaniment.

C Freely

Piano accompaniment for the second system, starting with a forte (*f*) dynamic and ending with a piano (*p*) dynamic. The bass line features a triplet of eighth notes.

Ripe straw-ber-ries, ripe!

milk to - day, mis - tress?

Who will buy my sweet red

oo

oo

Piano accompaniment for the third system, featuring a triplet of eighth notes in the bass line.

Ripe straw-ber-ries, ripe!
An - y milk to - day, mis - tress?
ros - es?
Who will

mf

This system contains the first vocal entry and piano accompaniment. It features three vocal staves and a grand staff for piano. The lyrics are: 'Ripe straw-ber-ries, ripe! An - y milk to - day, mis - tress? ros - es? Who will'. A triplet of eighth notes is marked with a '3' above it. The piano part includes a fermata over the first measure.

rall.
Who will buy?
Who will buy?
Who will buy?
Who will buy?

mf

f *dim.* *pp*

f *dim.* *pp*

This system continues the vocal melody and piano accompaniment. The lyrics are: 'Who will buy? Who will buy? Who will buy? Who will buy?'. The piano part features a fermata over the first measure and dynamic markings: *f*, *dim.*, and *pp*. The tempo is marked 'rall.'.

rall.

pp

This system shows the final part of the piano accompaniment. It includes a fermata over the first measure and a dynamic marking of *pp*. The tempo remains 'rall.'.

D Slowly (rubato)

Alto solo mf

Who will

mf Who will buy this won - der - ful morn - ing?

mf *unis.*

D Slowly (rubato)

buy my sweet red ros - es?

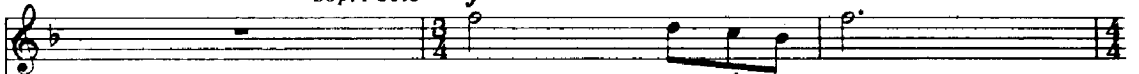
pp *mf* *unis.*

Such a sky you

pp *mf* *unis.*

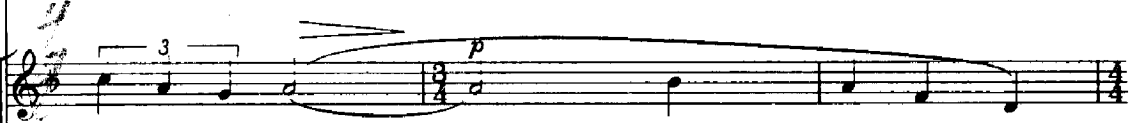
Sop. I solo

f



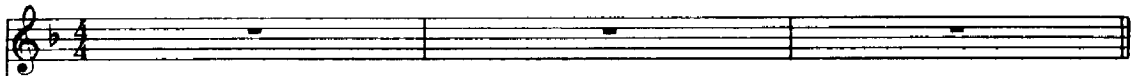
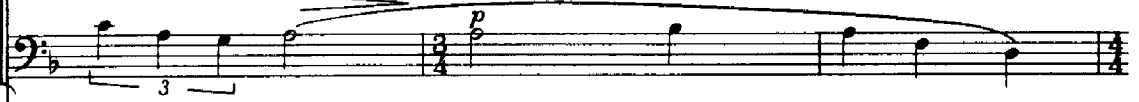
Ripe

straw-ber-ries, ripe!



nev - er did see

Ah



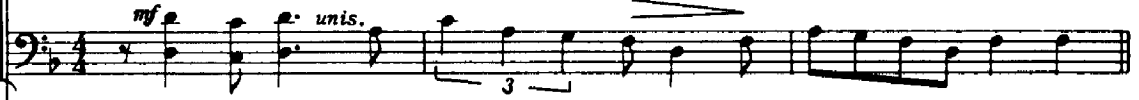
mf

unis.

rall.



Who will tie it up with a rib-bon and put it in a box for



mf

unis.

rall.



S. A tempo (start rather slowly) E gradually faster

A. me? So I could see it at my
T. me? So I could see it at my

p

A tempo (start rather slowly) E gradually faster

p

lei - sure when - ev - er things go wrong,

— And I would keep it as a trea - sure.

to last my whole life long.

F (♩ = about 126)

unis. f >

Who will buy this won-der-ful feel - ing? I'm so

unis. f >

F (♩ = about 126)

f

high I swear I could fly! — Me, oh my! I

G

gradually slower

don't want to lose — it, So what am I to do to keep the sky so

G

gradually slower

rall.

a tempo (♩ = 126)

pp

blue? There must be some - one who will buy. There'll nev - er

rall.

a tempo (♩ = 126)

H

gradually getting louder

be a — day — so — sun - ny, It —

Doo-dle-oot *dut doo - dut dut dut dut Doo - dut doo - dut doo - dut

H

8va

gradually getting louder

could not hap - pen twice. Where is the

Doo-dle-oot dut doo - dut dut dut dut Doo - dut dut

mf

8va

This system contains the first two staves of music. The top staff is a vocal line with lyrics. The bottom staff is a piano accompaniment. The lyrics are "could not hap - pen twice. Where is the". Below the piano accompaniment, there are rhythmic syllables: "Doo-dle-oot dut doo - dut dut dut dut Doo - dut dut". A dynamic marking of *mf* is present. An *8va* marking is above the piano accompaniment.

man with all the mon - ey? It's cheap at

mf

This system contains the third and fourth staves of music. The top staff is a vocal line with lyrics. The bottom staff is a piano accompaniment. The lyrics are "man with all the mon - ey? It's cheap at". A dynamic marking of *mf* is present.

mf

This system contains the fifth and sixth staves of music, which are piano accompaniment. A dynamic marking of *mf* is present.

half the price! Who will buy this

ff

This system contains the seventh and eighth staves of music. The top staff is a vocal line with lyrics. The bottom staff is a piano accompaniment. The lyrics are "half the price! Who will buy this". A dynamic marking of *ff* is present. A first ending bracket labeled "I" is above the vocal line.

ff

This system contains the ninth and tenth staves of music, which are piano accompaniment. A dynamic marking of *ff* is present. A first ending bracket labeled "I" is above the piano accompaniment.

won-der-ful feel - ing? I'm so high, I swear I could fly!

Me, oh my! I don't want to lose it, So

J Slower *f* *rall.* *mf* *unis.* Slowly
 what am I to do to keep the sky so blue? There must be some-one who will

J Slower *f* *rall.* *mf* *Slowly*

K Slowly (as at beginning)

Sop. I solo

Sop. II solo

Alto solo

p

Who will buy my sweet red roses, two—

p buy!

unis. Oo

K Slowly (as at beginning)

mf

p

mf

Ripe strawberries, ripe!

mf

An - y

blooms for a penny?

p

Who will

mf

p

es, two_

An - y

will

p

Ripe straw-ber-ries, ripe!

milk to - day, mis - tress? Who will buy?

mf

Who will buy?

buy

This system contains the first vocal entry. The vocal line starts with a treble clef and a key signature of one flat. The lyrics are "Ripe straw-ber-ries, ripe! milk to - day, mis - tress? Who will buy?". A triplet of eighth notes is marked with a "3" above it. The piano accompaniment consists of a grand staff with a treble and bass clef, featuring a simple harmonic accompaniment.

mf

Who will buy?

mf

Who will buy?

mf

Who will buy?

f

Who will buy? Who will buy?

This system continues the vocal melody. The lyrics are "Who will buy?". The piano accompaniment features a more active bass line. Dynamics include *mf* and *f*.

f

p

Ped.-

This system shows the piano accompaniment for the final part of the page. It includes a grand staff with a treble and bass clef. Dynamics include *f* and *p*. A pedaling instruction "Ped.-" is present at the bottom.